
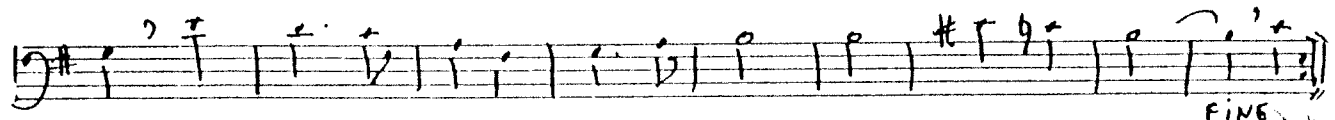
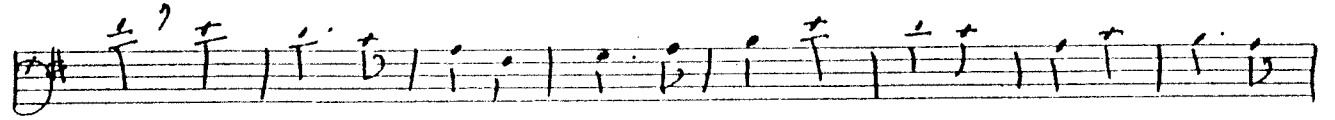
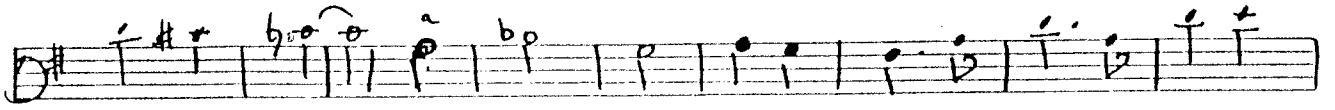
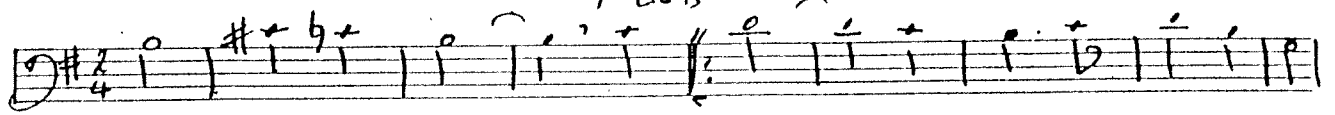



arr.: Carnaval '66

instr.: 
partij: Bes

Ik ZAL JOU WA VERTELLE
LIED

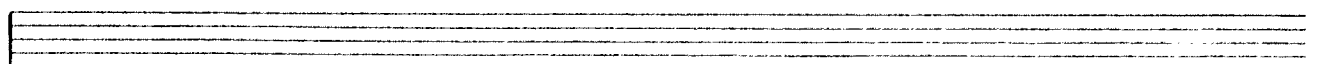
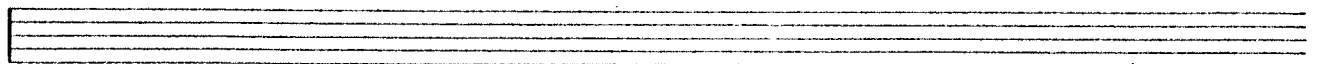
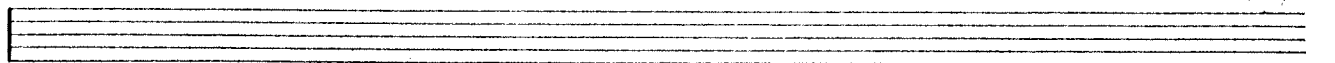
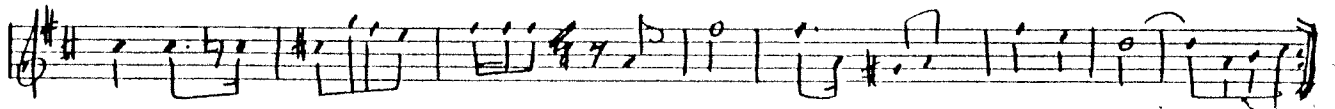
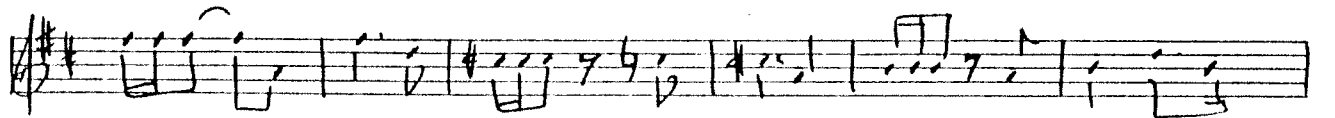
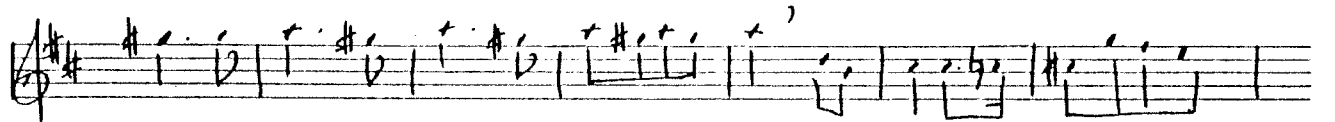
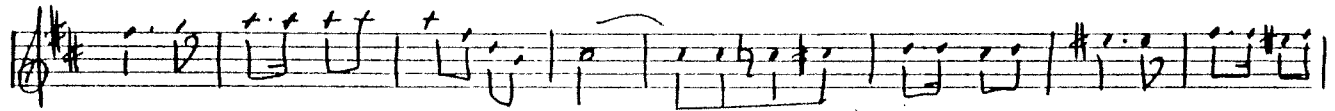
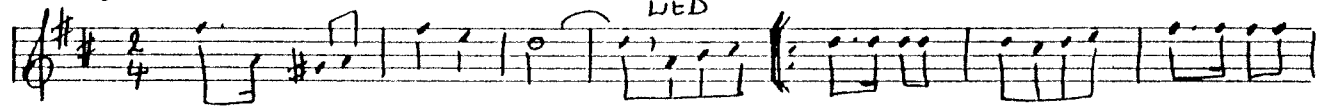


arr.: Carnaval '66


instr.: 
partij: Es

Ik ZAL JOU WA VERTELLE
LIED

INTRO



arr.: Carnaval '66


instr.: 
partij: Bes II

Ik zal jou wa vertelle

INTRO LIED

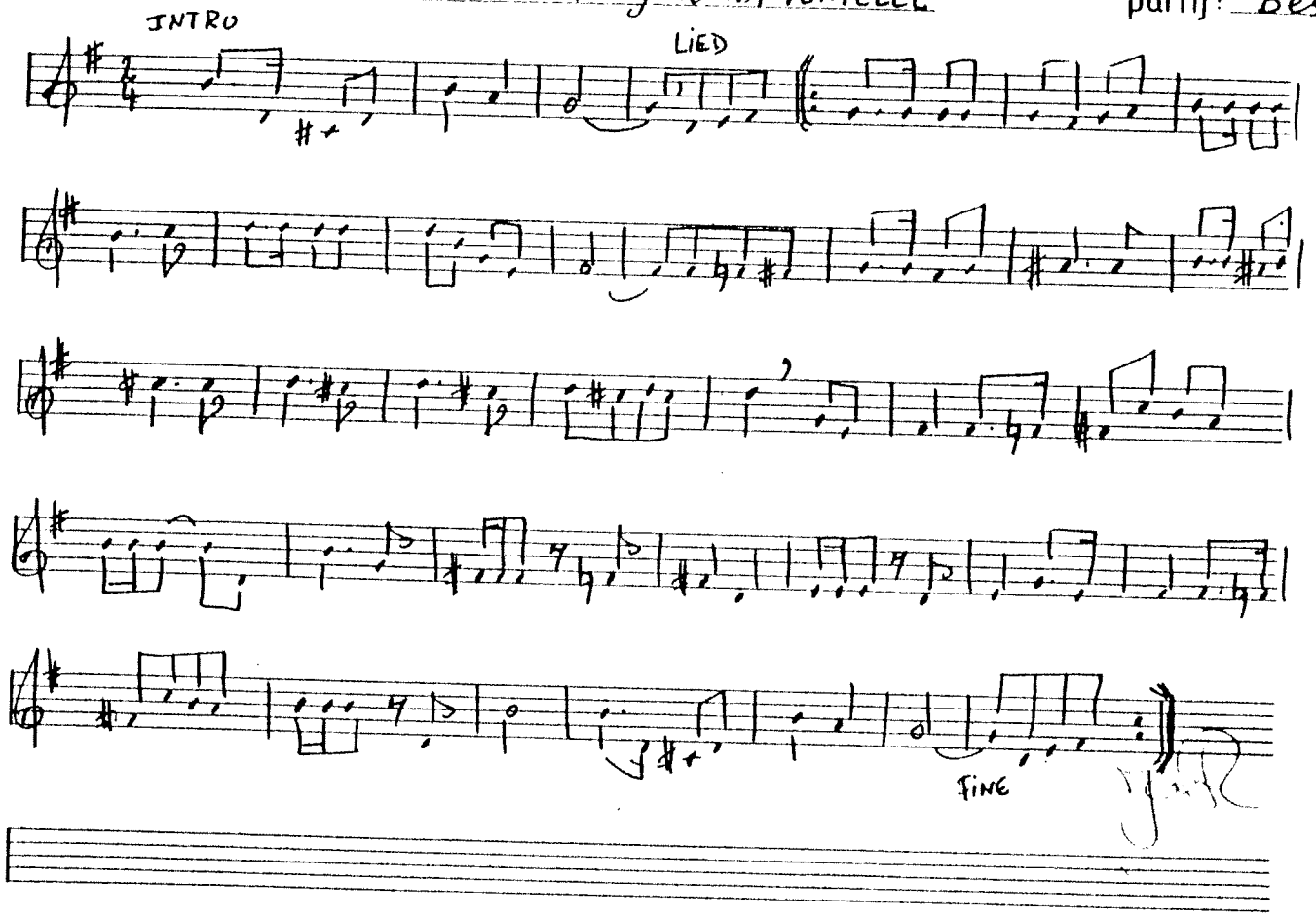
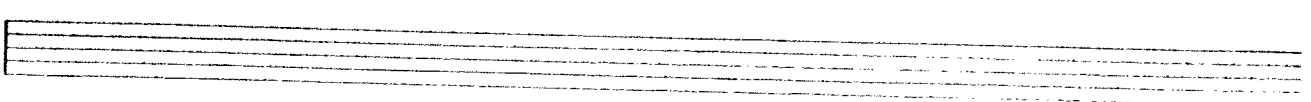


arr.: Carnaval '66

instr.: 
partij: Bes II

IK ZAL JOU WA VERTELLE

INTRO LIED

arr.: Carnaval '66

instr.: 2

Ik ZAL jou WA VERTELLE

partij: C

LIED

FINE

arr.: Carnaval '66

instr.: 2 Bes

Ik ZAL jou WA VERTELLE

partij: Bas

INTRO

LIED

FINE

arr.: Carnival '66

instr.: 2 Es

Ih ZAL JOY WA VERTELLE

partij: Bas

INTRO Lied.

FINE

Governors Melodie 1966

arr. tekst
Lorenz F. Mansfeld

Handwritten musical score consisting of 11 staves. The notation includes various notes, rests, and dynamic markings such as *f*, *mf*, and *fz*. The key signature is one sharp (F#).

the longest day
 the longest day
 the longest day

Do-ces me famelic day
 the longest day
 the longest day

Don't look
 your eyes
 to the lake
 the longest day
 the longest day