

arr.: Carnaval '67

Priems Jan as't kan

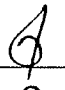
instr.: ?  
partij: Bes

Handwritten musical score for 'Priems Jan as't kan'. The score is written on a single staff in G major (one sharp) and 2/4 time. It begins with a treble clef and a key signature of one sharp (F#). The melody consists of several measures of music, including a triplet of eighth notes. The piece concludes with a double bar line and the word 'FINE' written below the staff. A large, stylized signature is written at the end of the piece.

Five empty musical staves, each consisting of five horizontal lines, provided for additional notation or accompaniment.

arr.: Carnaval '67

Vriens Jan as't kan

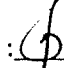
instr.:   
partij: Bes II

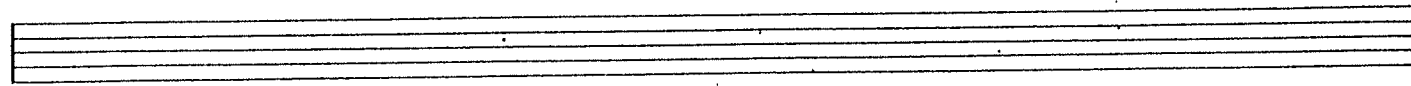
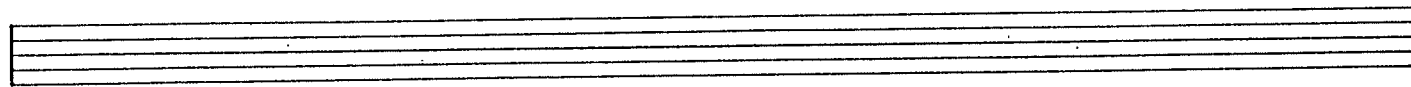
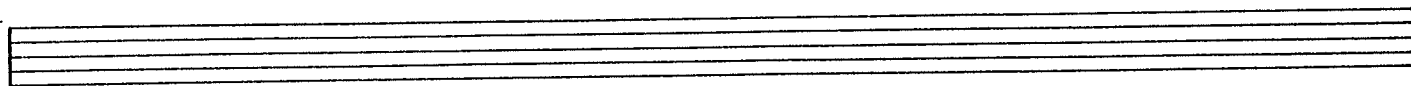
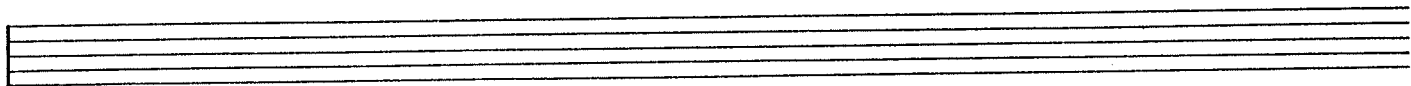
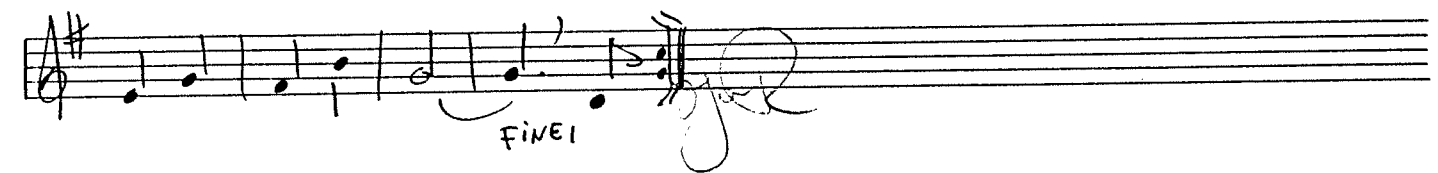
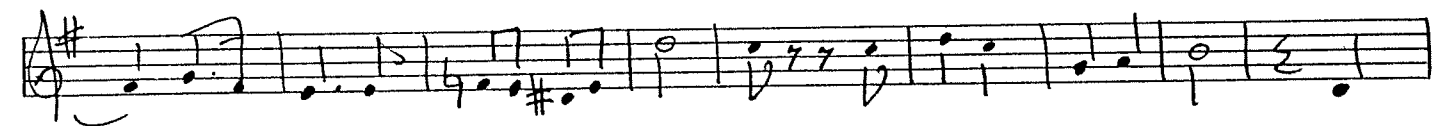
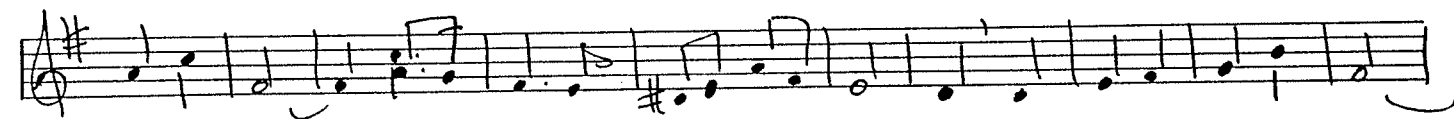
REFR.

FINE

arr.: Carnaval '67

Priens Jan as't kan

instr.:   
partij: Bes I



arr.: Carnaval '67

# Priens Jan an t'kan

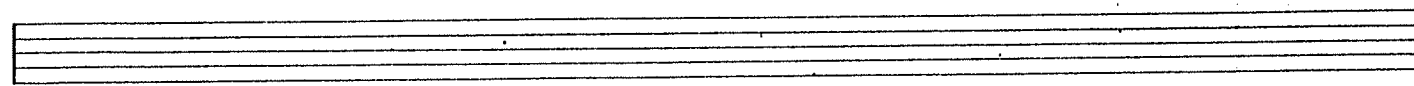
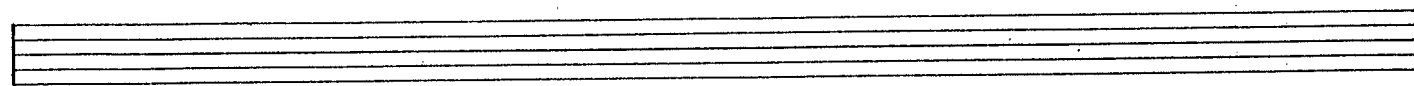
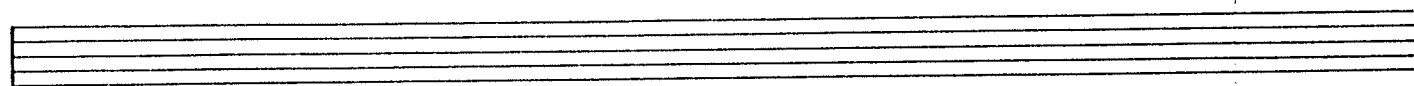
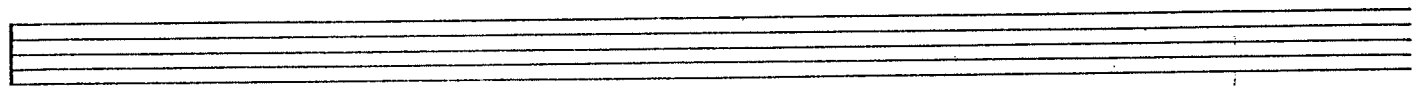
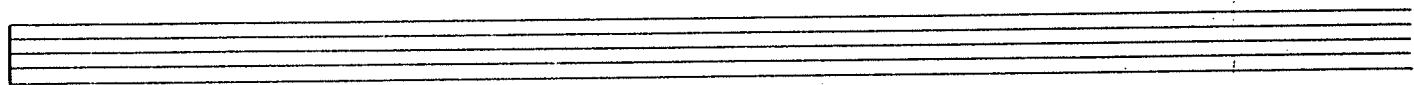
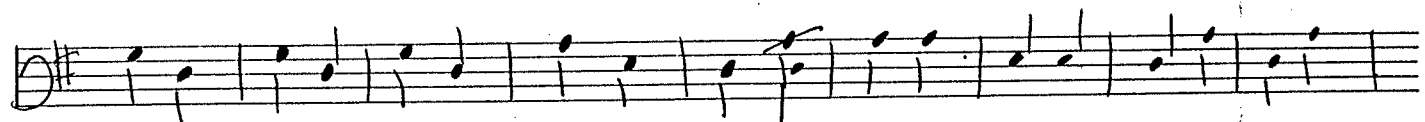
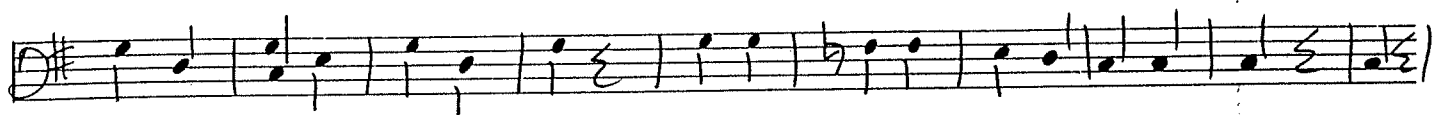
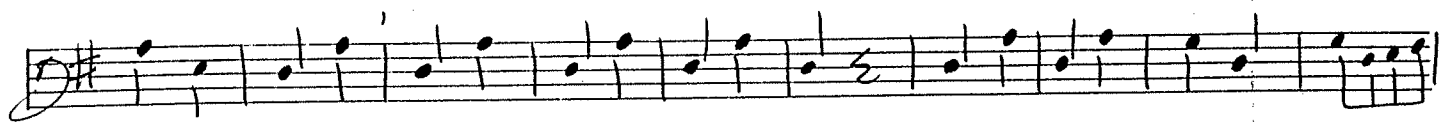
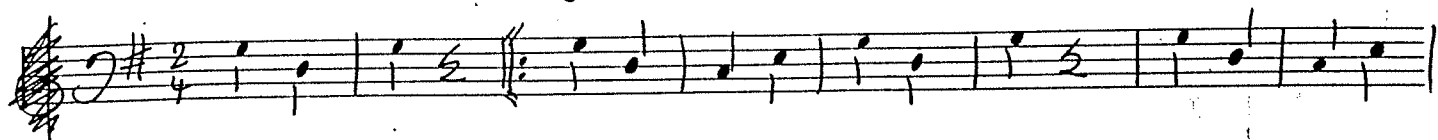
instr.: D

partij: Es Bas

arr.: Carnaval '67

Priens Jan as't kan

instr.: 2  
partij: Bas & Be



arr.: Carnaval '67


# Priens Jan an 't kan

instr.: D  
partij: C

REFR.

arr.: Carnaval '67

Prins Jan a't kan

instr.:   
partij: Es

complet.

gr. 11

refrein

FINE.