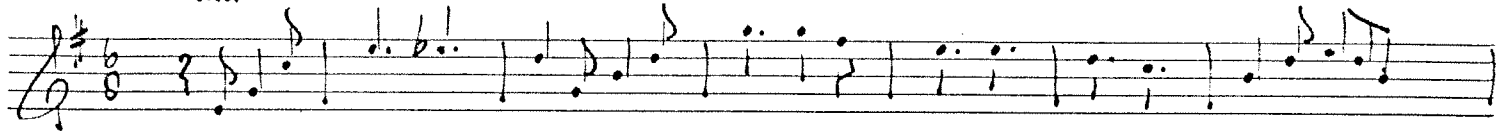


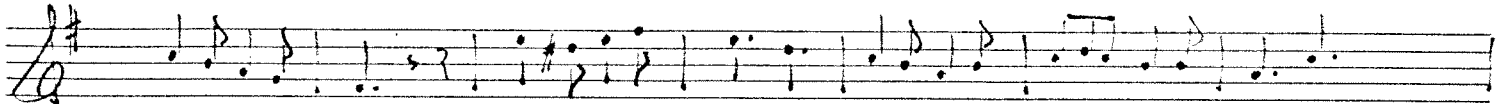
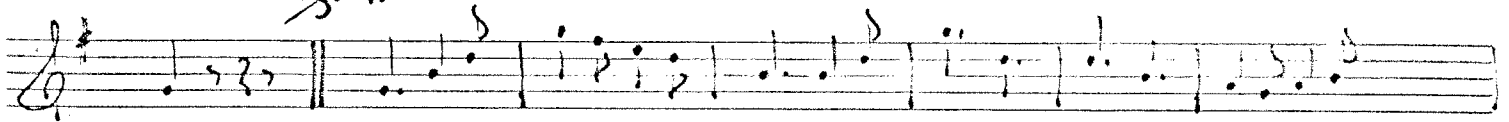
TENOR Sax.  
Marstempo.

# Leg di's aan in Roosendaal. 1969

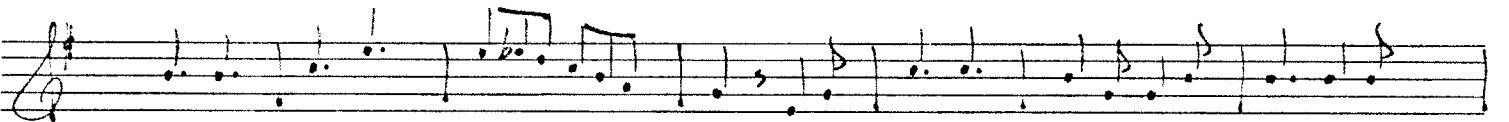
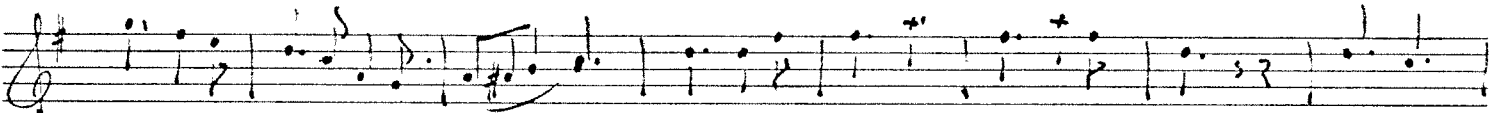
intro



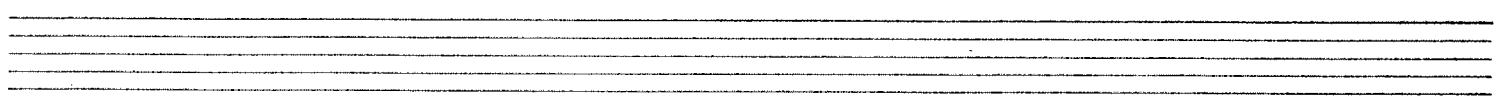
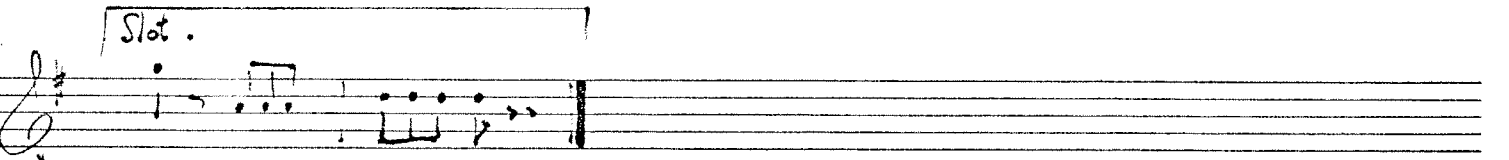
f. VERSE



Refrein



Slot.



Frombone B<sup>b</sup>.  
Marstempo

Leg d'is aan in Roosendaal. 1969

intro >

f. VERSE

Refrain >

1-3

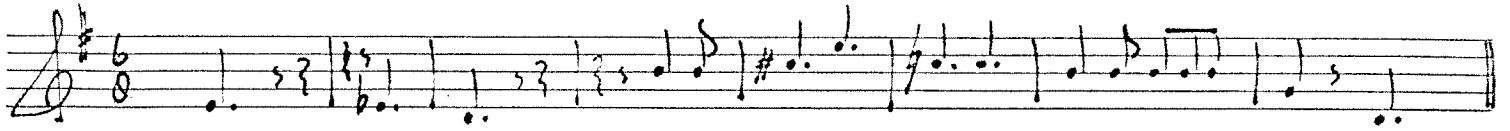
2

f. Stad

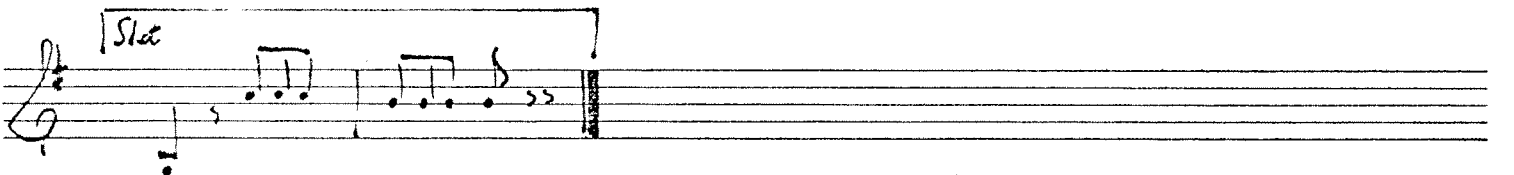
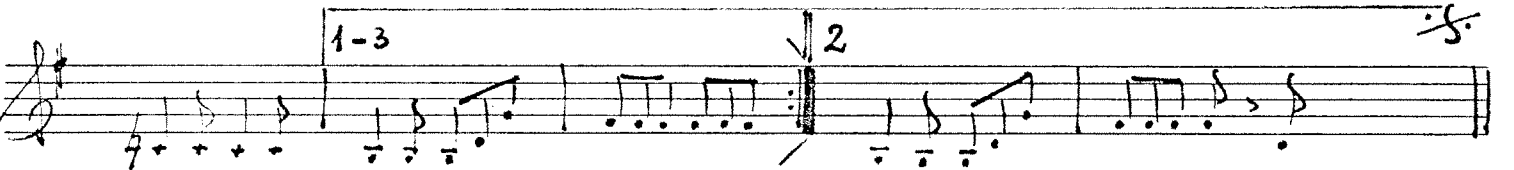
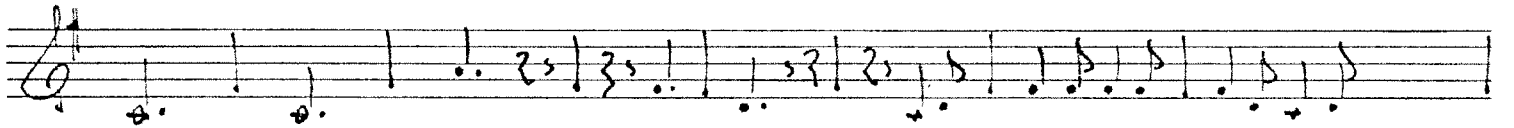
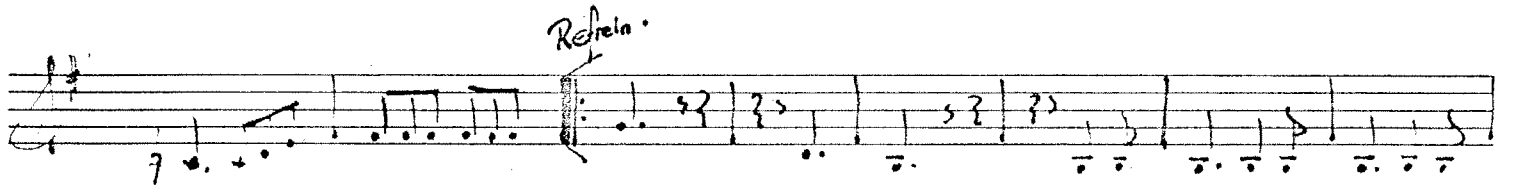
Trompet II  
Marstempo

Leo d'is aan in Roosendaal. 1969

Intro



VERSE



Trompet I  
Marstempo.

Leg d'is aan in Roosendaal.

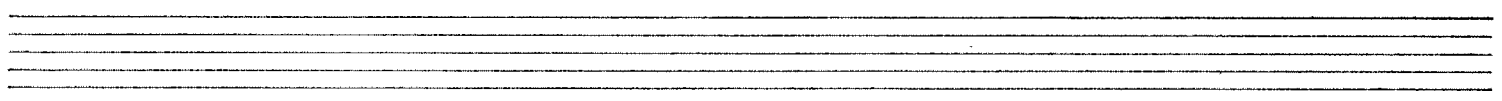
1969

intro

1. Verse

Refrain

terug n. verse



Bariton.

Leg d'Is don in Roosendaal 1969

Marstempo.

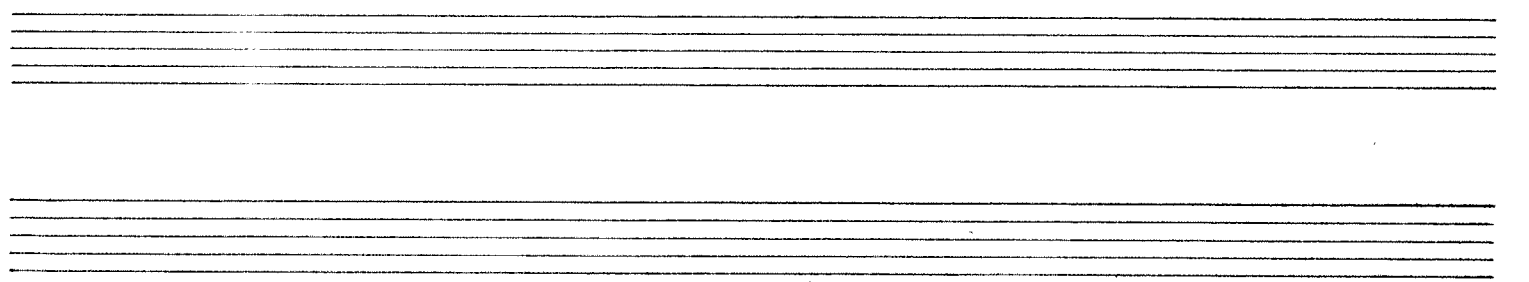
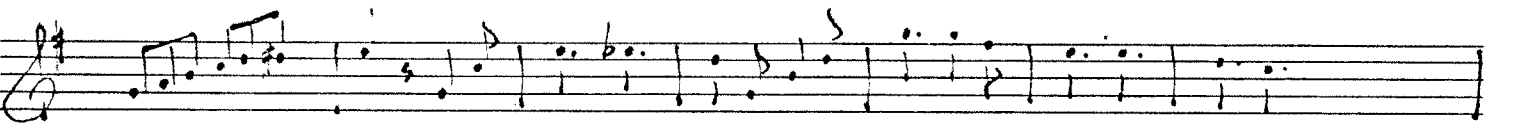
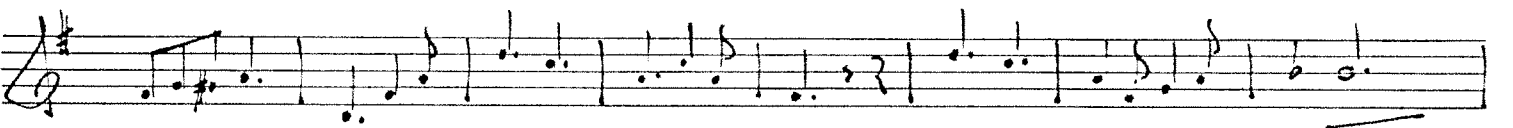
Intro



f. VERSE



Refrain

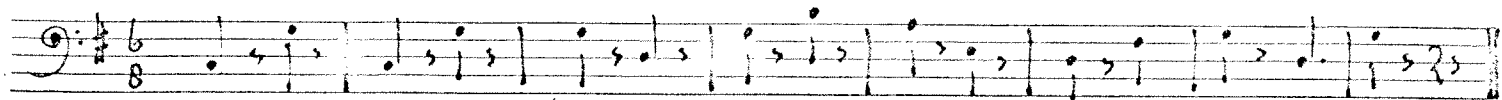


Bas <sup>B<sup>b</sup></sup>.

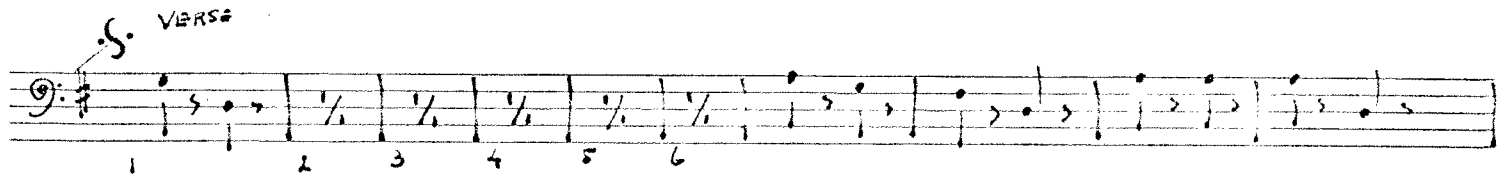
# Leg d'is aan in Roosendaal. 1964

Marstempo.

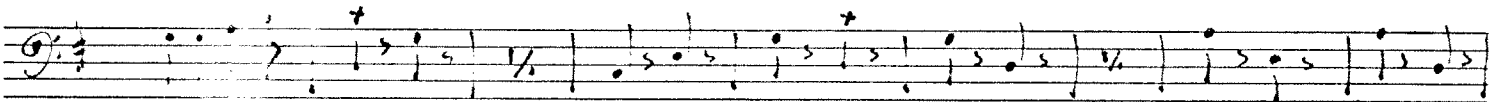
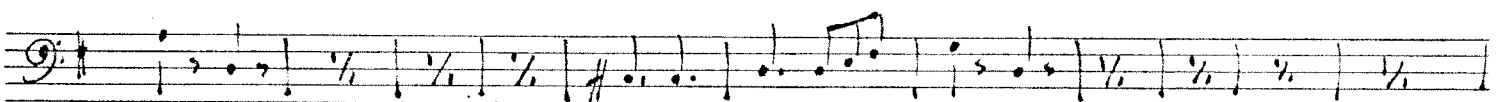
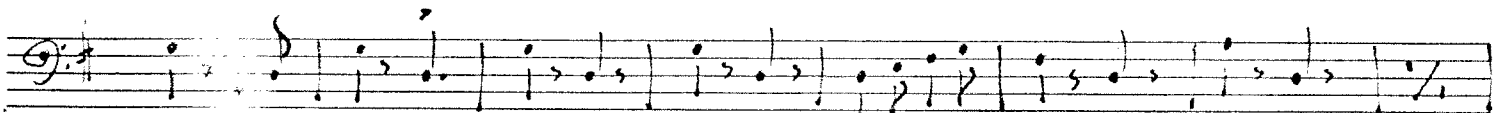
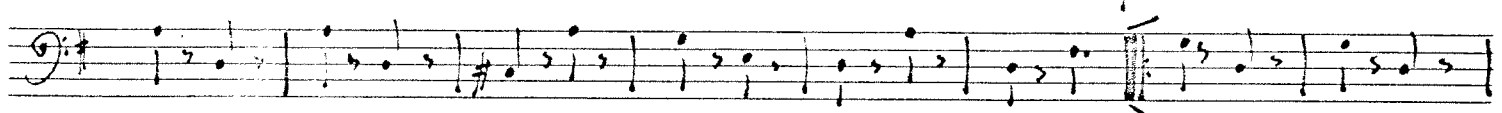
intro



VERSE



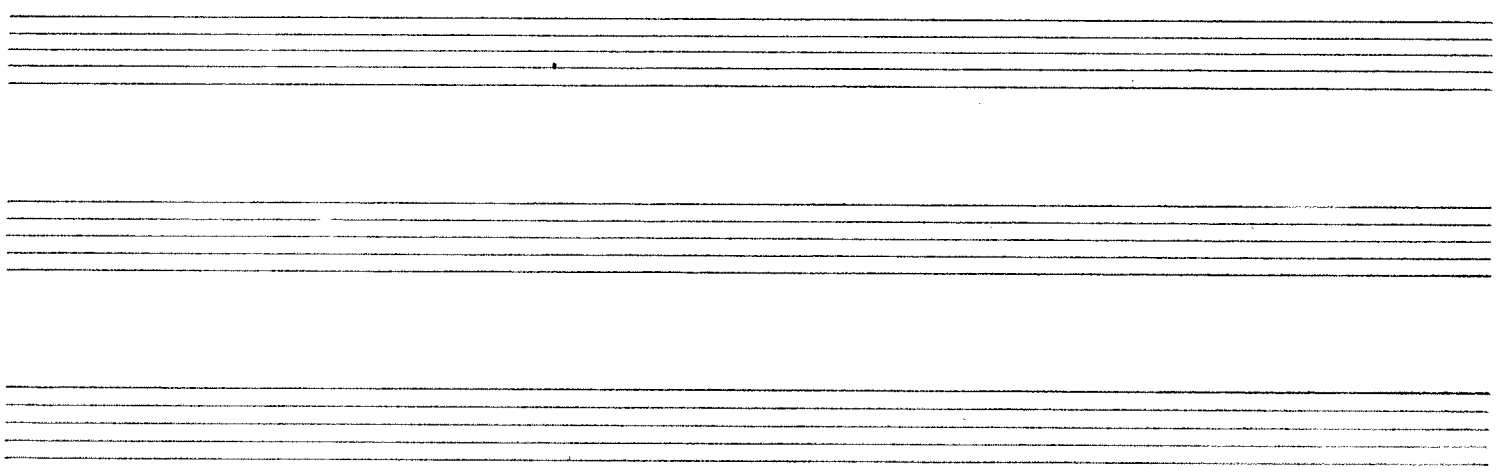
Reprise.



1-3

2

S! Slot.



Leg d'is zoon in Roosendaal.

1969 1

Handwritten musical notation for the first system, consisting of two staves. The notation includes various notes, rests, and accidentals. Above the first staff, there are handwritten annotations: 'c', 'a', 'c', '552', '22', '9', '9', '22'. The music is written in a treble clef with a key signature of one sharp (F#).

Handwritten musical notation for the second system, consisting of two staves. The notation includes various notes, rests, and accidentals. The music is written in a treble clef with a key signature of one sharp (F#).

Handwritten musical notation for the third system, consisting of two staves. The notation includes various notes, rests, and accidentals. The music is written in a treble clef with a key signature of one sharp (F#).

Handwritten musical notation for the fourth system, consisting of two staves. The notation includes various notes, rests, and accidentals. The music is written in a treble clef with a key signature of one sharp (F#).

Handwritten musical notation for the fifth system, consisting of two staves. The notation includes various notes, rests, and accidentals. The music is written in a treble clef with a key signature of one sharp (F#).

Handwritten musical notation system 1, consisting of three staves. The top staff is in treble clef with a key signature of one sharp (F#). It contains six measures of music with various note values and rests. The middle and bottom staves contain accompaniment with chords and rhythmic patterns. There are some handwritten annotations like 'a.' and 'v.'.

Handwritten musical notation system 2, consisting of three staves. The top staff is in treble clef with a key signature of one sharp (F#). It contains six measures of music. The middle and bottom staves contain accompaniment. There are some handwritten annotations like 'v.' and 'v.'.

Handwritten musical notation system 3, consisting of four staves. The top staff is in treble clef with a key signature of one sharp (F#). It contains six measures of music. The second and third staves contain accompaniment with some complex rhythmic patterns. The bottom staff contains a single line of music. There are some handwritten annotations like 'v.' and 'v.'.

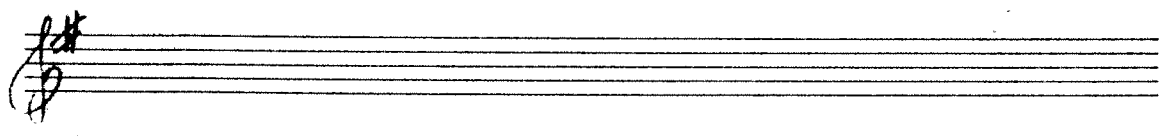
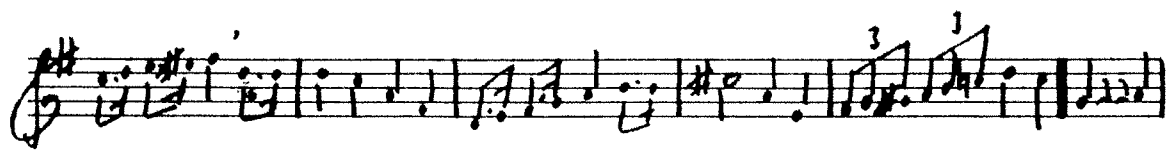
Handwritten musical notation system 4, consisting of four staves. The top staff is in treble clef with a key signature of one sharp (F#). It contains four measures of music. The second and third staves contain accompaniment. The bottom staff contains a single line of music. There is a thick vertical line at the end of the system, indicating the end of a section.



Banjo

1969

4 X



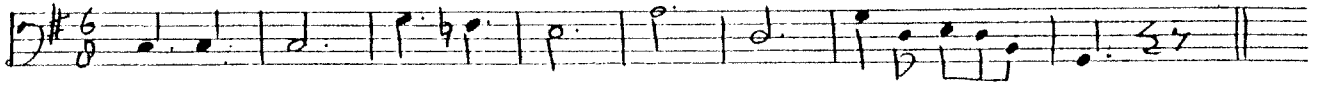
arr.: Carnaval '69

LÈG D'is AON

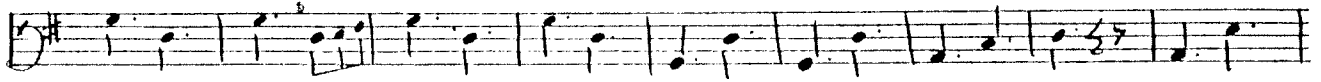
instr.: 2

partij: Bas Bes

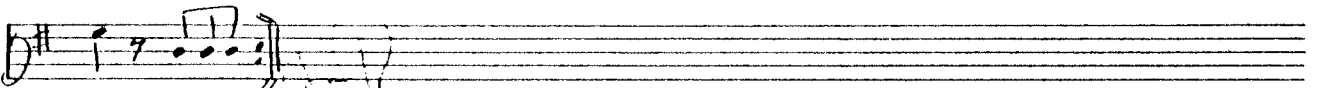
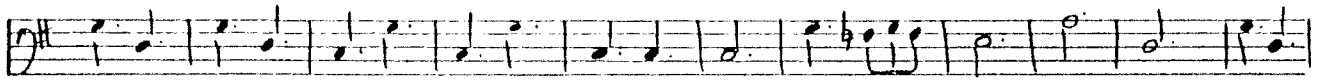
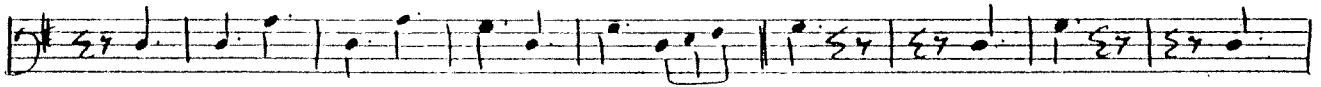
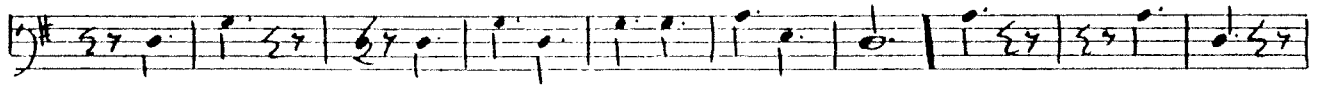
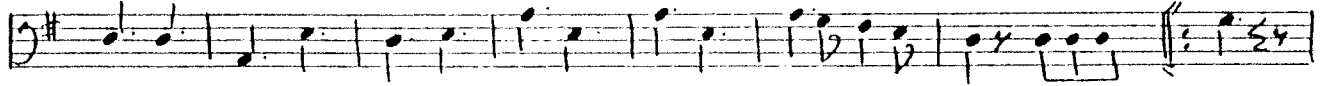
INTRO



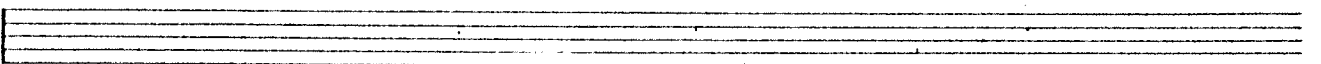
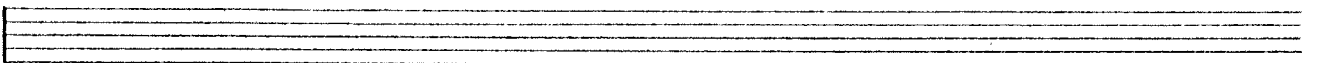
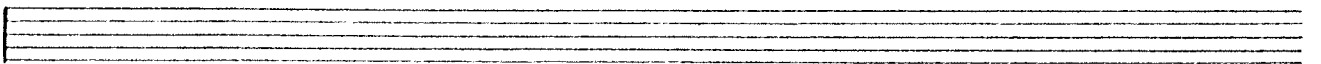
COUPLET



REFRAIN



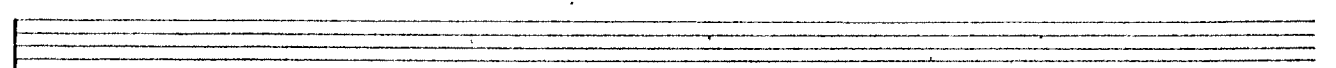
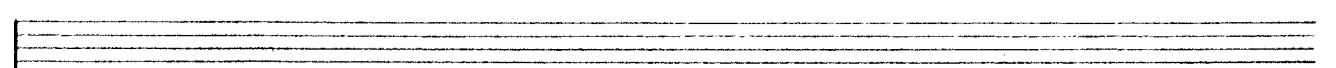
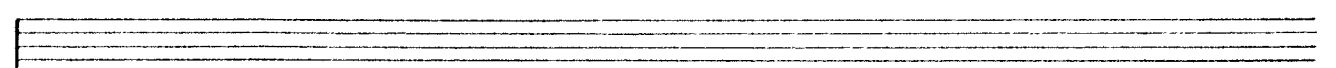
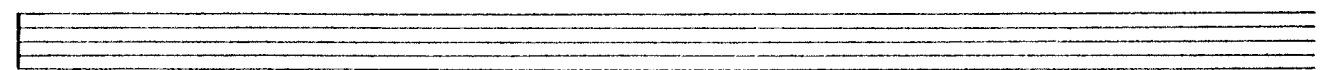
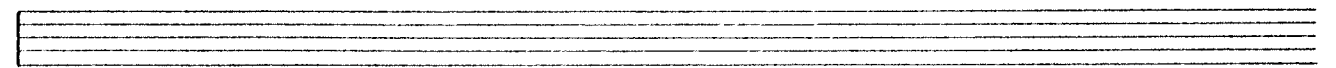
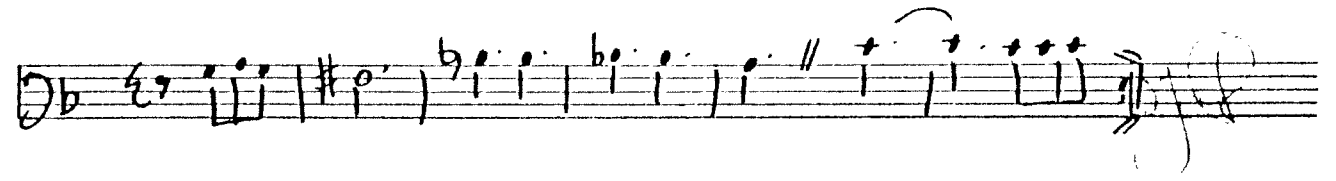
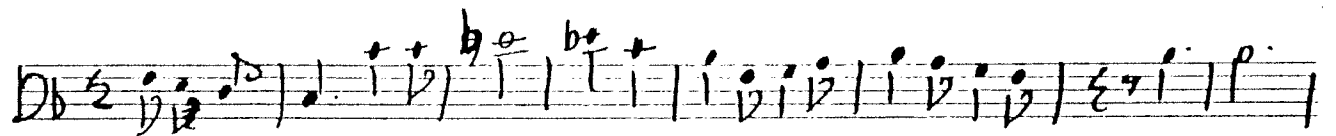
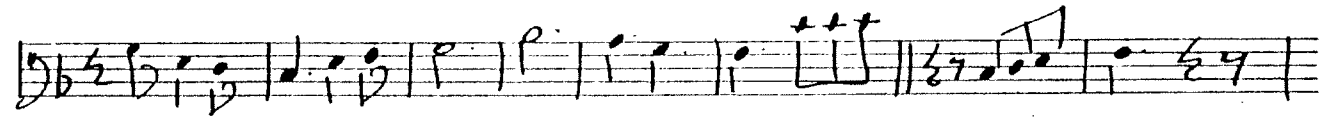
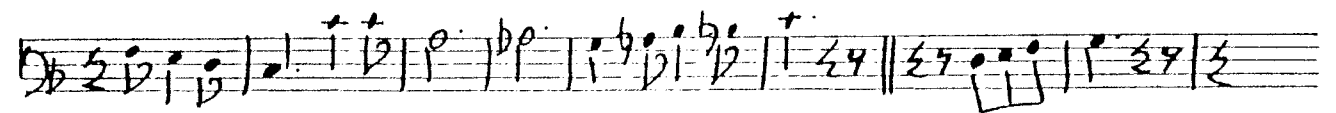
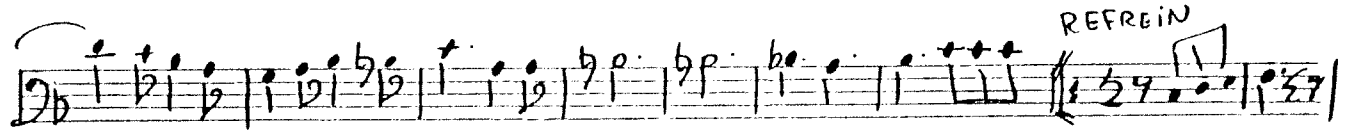
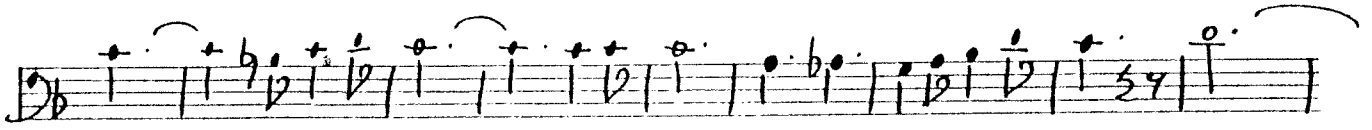
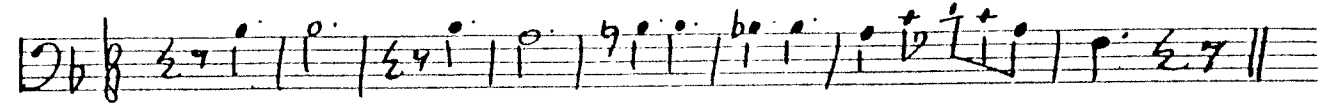
FINE



arr.: Carnaval '69

LÈG D'is AON

instr.: D'  
partij: C



arr.: Carnaval '69

L'EG D'IS AON

instr.:  $\emptyset$   
partij: Es I

Handwritten musical score for 'L'EG D'IS AON' in E major (one sharp) and 6/8 time. The score consists of seven staves of music. The first staff begins with a treble clef and a key signature of one sharp (F#). The music is written in a rhythmic style characteristic of carnival music, featuring eighth and sixteenth notes. The notation includes various rhythmic values, rests, and dynamic markings. The piece concludes with a double bar line and repeat signs.

Five empty musical staves, each consisting of five horizontal lines, provided for additional notation or accompaniment.

arr.: Carnaval '69

L'EG D'IS AON

instr.: J.

partij: Bes.

INTRO

complet

REFRAIN.

a b c cis d

arr.: Carnival '69

# LÈG D'is AON

instr.:  $\phi$   
partij: Bes II

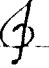
## INTRO

## COMPLET

## REFREIN

arr.: Carnaval '69

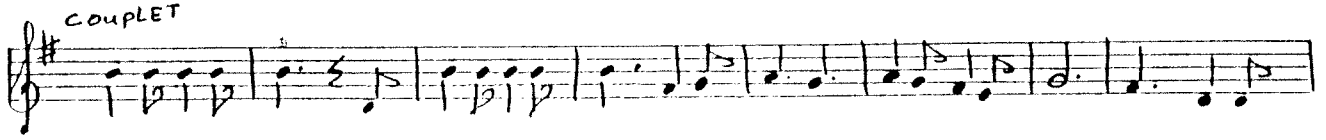
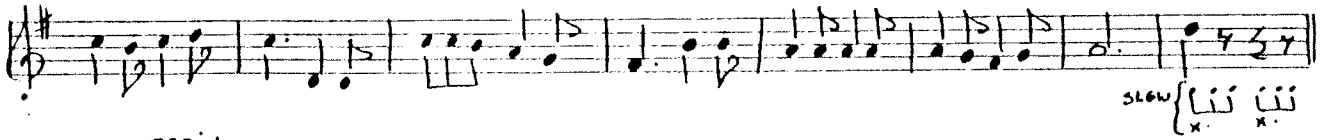
LÈG D'IS AON

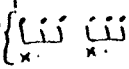
instr.:   
partij: Bes I

INTRO

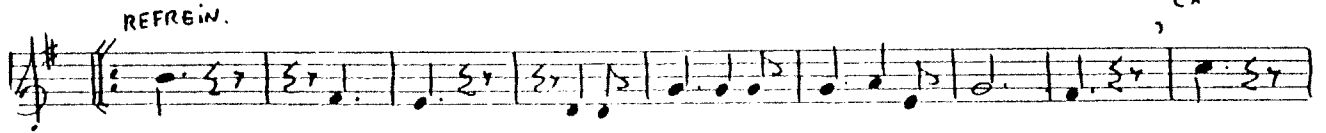
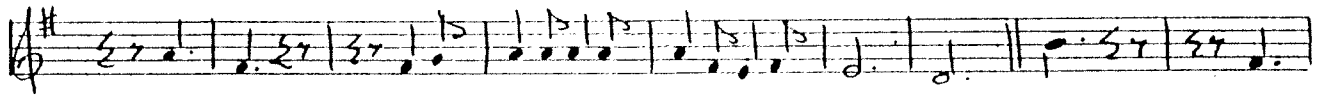
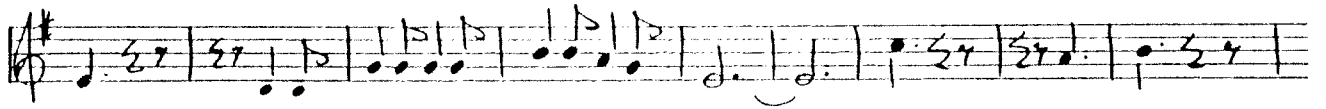


COUPLET

slow 

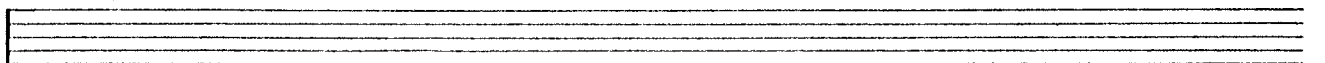
REFRAIN.

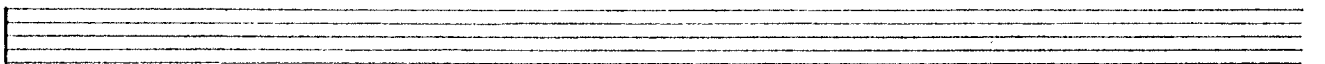




FINE.



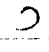





arr.: Carnaval '69

LÈG D'IS AON

instr.:   
partij: Bas Es

INTRO

