

"MIJN STADJE"

TEKST+MEZIEK: JACK SANDERS
ARR: MARTIN DE HAECK/LAMME WILLEM

FLOUT

$\text{♩} = 180$

INTRO

9

COUplet

19

27

REFRAIN

2 4 5

41-42 43-46 50-54

58 3

3 61-63

70 1.2. 3.

"MIJN STADJE"

KLARINET 2

TEKST+MIEZIK: JACK SANDERS
ARR: MARTIN DE HAECCK/LAMME WILLEM

♩=180 **INTRO**



9 **COUplet**



19



27



REFREIN

2 4 5

41-42 43-46 50-54



58 3

61-63



70 1.2. 3.



ALT SAX

"MIJN STADJE"

TEKST+MEZIEK: JACK SANDERS
ARR: MARTIN DE HAECK/LAMME WILLEM

♩=180

INTRO

COUPLÉ

14

27

41

REFRAIN

55

68

12.

3.

"MIJN STADJE"

TEKST+MEZIEK: JACK SANDERS
ARR: MARTIN DE HAECK/LAMME WILLEM

TÉNOR SAX $\text{♩} = 180$

INTRO



COUPLÉ

14



27



41

REFRAIN



55



68



TRUMPET (SPIJKERS)

"MIJN STADJE"

TEKST+MEZIEK: JACK SANDERS
ARR: MARTIN DE HAECCK/LAMME WILLEM

♩=180

INTRO

COUPLÉ

REFRAIN

12.

3.

"MIJN STADJE"

TEKST+MEZIEK: JACK SANDERS
ARR: MARTIN DE HAECK/LAMME WILLEM

TROMPET 1

$\text{♩} = 180$

INTRO

COUPLÉ



"MIJN STADJE"

TEKST+MEZIEK: JACK SANDERS
ARR: MARTIN DE HAECK/LAMME WILLEM

TROMPET 2

♩=180

INTRO

COUPLÉ



"MIJN STADJE"

TEKST+MEZIEK: JACK SANDERS

ARR: MARTIN DE HAECCK/LAMME WILLEM

TROMBONE 1

♩=180

INTRO

COUplet

13

3

19-21

3

27-29

2

36-37

REFRAIN

42

55

67

12.

3.

"MIJN STADJE"

TEKST+MEZIEK: JACK SANDERS

ARR: MARTIN DE HAECCK/LAMME WILLEM

TROMBONE 2

$\text{♩} = 180$

INTRO

COUPLÉ

13

REFRAIN

42

55

67

"MIJN STADJE"

TEKST+MEZIEK: JACK SANDERS

ARR: MARTIN DE HAECCK/LAMME WILLEM

BARITONE

♩=180

INTRO

COUPLÉ

13

3

19-21

3

27-29

2

36-37

REFRAIN

42

55

67

12.

3.

"MIJN STADJE"

TEKST+MEZIEK: JACK SANDERS
ARR: MARTIN DE HAECK/LAMME WILLEM

BAS IN B \flat $\text{♩} = 180$ INTRO COUPLÉ

The first line of music begins with a treble clef, a key signature of one flat (B-flat), and a 3/4 time signature. The tempo is marked as quarter note = 180. The piece starts with an 'INTRO' section consisting of three measures of eighth notes. This is followed by a 'COUPLÉ' section, which is a 16-measure phrase. The first measure of the couplé is a half note, followed by eighth notes and quarter notes. The section ends with a repeat sign.

14

The second line of music continues the 16-measure couplé phrase from the first line, starting with a half note followed by eighth notes and quarter notes.

26

The third line of music continues the 16-measure couplé phrase from the first line, starting with a half note followed by eighth notes and quarter notes.

38 REFREIN

The fourth line of music begins the 'REFREIN' section. It starts with a half note, followed by eighth notes and quarter notes. The section ends with a repeat sign.

49

The fifth line of music continues the refrain, starting with a half note followed by eighth notes and quarter notes.

59

The sixth line of music continues the refrain, starting with a half note followed by eighth notes and quarter notes.

71 12. 3.

The seventh line of music continues the refrain. It features a 12-measure phrase followed by a 3-measure phrase. The piece ends with a double bar line.

"MIJN STADJE"

TEKST+MEZIEK: JACK SANDERS

ARR: MARTIN DE HAECCK/LAMME WILLEM

BAS IN Eb $\text{♩} = 180$

INTRO

COUPLÉT

13

25

37

REFREIN

48

59

71

12.

3.

"MIJN STADJE"

TEKST+MEZIEK: JACK SANDERS
ARR.: MARTIN DE HAECR/LAMME WILLEM

BANJO

$\text{♩} = 180$

INTRO

A^b

B^b7

E^b

$D7$

B^b7

COUplet

Musical notation for the first staff, measures 1-10. The staff is in 3/4 time with a key signature of two flats. It begins with a whole rest, followed by eighth notes and quarter notes. Chords A^b , B^b7 , E^b , $D7$, and B^b7 are indicated above the staff.

Musical notation for the second staff, measures 11-23. The staff continues with eighth and quarter notes. Chords E^b , B^b7 , E^b , B^b7 , E^b , E^b4 , E^b , B^b6 , B^b5+B^b7 , A^b , and E^b are indicated above the staff. A '4' indicates a four-measure rest.

Musical notation for the third staff, measures 24-36. The staff continues with eighth and quarter notes. Chords E^b , E^b , B^b7 , E^b , E^b , E^bm , E^b , E^b7 , A^b , A^bm , E^b , E^b4 , and E^b are indicated above the staff.

Musical notation for the fourth staff, measures 37-54. The staff continues with eighth and quarter notes. Chords B^b7 , E^b , E^b , E^b0 , B^b7 , E^b , E^b , B^b7 , B^b7 , and B^bm7 are indicated above the staff. A 'REFREIN' box is placed above measures 37-40. A '4' indicates a four-measure rest.

Musical notation for the fifth staff, measures 55-66. The staff continues with eighth and quarter notes. Chords E^b0 , E^b , E^b , E^b0 , B^b7 , and E^b are indicated above the staff.

Musical notation for the sixth staff, measures 67-72. The staff continues with eighth and quarter notes. Chords A^b , B^b7 , E^b , and $D7$ are indicated above the staff. A '12.' indicates a twelve-measure rest.

Musical notation for the seventh staff, measures 73-84. The staff continues with eighth and quarter notes. Chords E^b and B^b7 are indicated above the staff. A '3.' indicates a three-measure rest. The piece ends with a final chord E^b .

"MIJN STADJE"

TEKST+MEZIEK: JACK SANDERS

ARR: MARTIN DE HAECK/LAMME WILLEM

BAS IN C

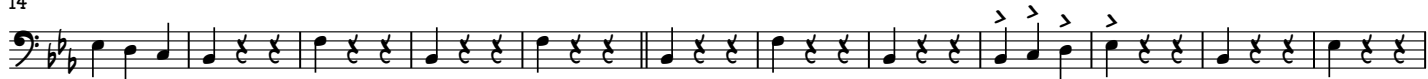
♩=180

INTRO

COUPEL



14



26



38

REFREIN



48



59



71

12.

3.



"MIJN STADJE"

TEKST+MEZIEK: JACK SANDERS

ARR: MARTIN DE HAECK/LAMME WILLEM

Drums

$\text{♩} = 180$

INTRO

COUPLÉ